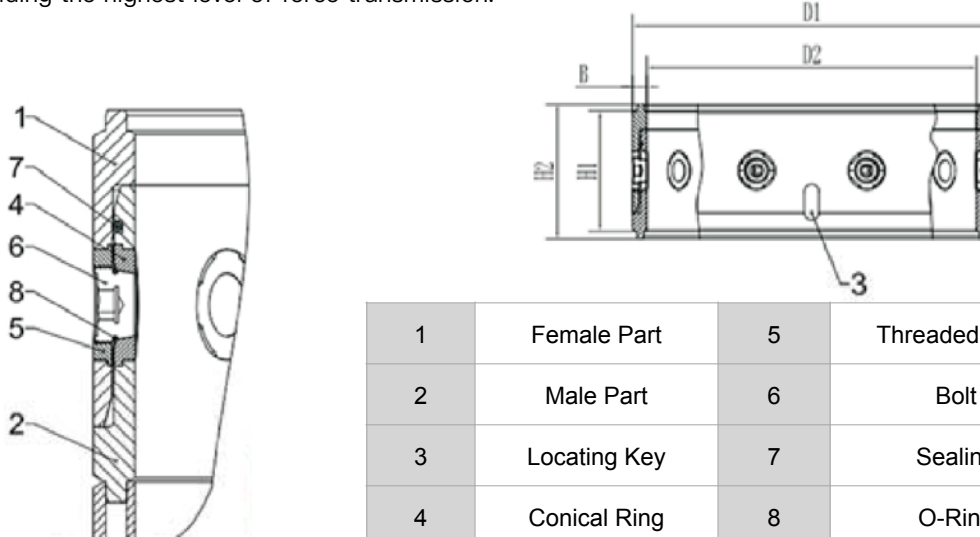


## SEGMENTAL CASING & ACCESSORIES

### 1. CASING JOINT

The casing joints are precision-machined to ensure fast, efficient replacement and secure bolting, providing the highest level of force transmission.



1	Female Part	5	Threaded Ring
2	Male Part	6	Bolt
3	Locating Key	7	Sealing
4	Conical Ring	8	O-Ring

DIMENSION					BOLTS & INSERTS				KEY	O-RING
D1/D2 (mm)	H1 (mm)	H2 (mm)	B (mm)	Weight (kg)	Bolt Type	Bolt qty	Thread Ring qty	Conical Ring qty	Locating Key qty	O-Ring (mm)
620/540	338	378	40	179	I	8	8	8	4	10x535
750/670	338	378	40	218	I	10	10	10	4	10x665
880/800	338	378	40	261	I	10	10	10	4	10x790
1000/920	338	378	40	300	I	10	10	10	4	10x910
1180/1100	338	378	40	355	I	12	12	12	4	10x1090
1200/1120	338	378	40	375	I	12	12	12	4	10x1110
1300/1220	338	378	40	393	I	12	12	12	4	10x1210
1500/1400	490	530	50	827	II	12	12	12	4	10x1400
1800/1700	490	530	50	998	II	12	12	12	4	10x1695
2000/1880	561	601	60	1520	II	12	12	12	8	10x1870
2200/2080	561	601	60	1670	II	12	12	12	8	10x2070
2500/2380	561	601	60	1800	III	16	16	16	8	10x2360

## 2. DOUBLE WALL SEGMENTAL CASING

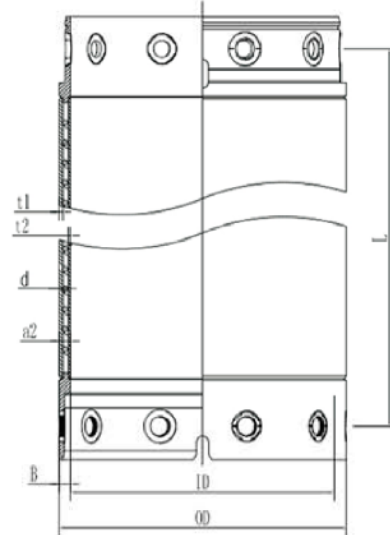
Double-wall casings consist of two layers of steel, with a gap & filler material between them, providing higher strength and torsion resistance.

### Advantages:

- **High Strength:** The double-wall structure makes these casings more durable, allowing them to perform well under high torque and in difficult geological conditions.
- **Durability:** Double-wall casings are less prone to deformation or damage in hard rock formations or gravel layers, offering longer service life.
- **Better Torsion Resistance:** They can transmit the rotary torque more effectively, ensuring stable performance during drilling.

### Applications:

- Ideal for complex geological conditions, such as hard rock formations or gravel layers, and deep drilling operations that require high strength and durability.



DIAMETER	LENGTH L (WEIGHT)						CASING WALL THICKNESS			BOLTS
	D1/D2 (mm)	1m (kg)	2m (kg)	3m (kg)	4m (kg)	5m (kg)	6m (kg)	t1 (mm)	t2 (mm)	Total Thickness a2 (mm)
620/540	403	739	1074	1411	1747	2081	12	8	40	8
750/670	492	902	1311	1722	2131	2540	12	8	40	10
880/800	585	1069	1552	2036	2520	3005	12	8	40	10
1000/920	669	1221	1773	2328	2877	3429	12	8	40	10
1180/1100	844	1580	2316	3052	3787	4522	16	8	40	12
1200/1120	872	1620	2370	3120	3870	4620	16	8	40	12
1300/1220	933	1246	2558	3372	4184	4996	16	8	40	12
1500/1400	1433	2628	3817	5009	6210	7393	20	10	50	12
1800/1700	1730	3166	4602	6038	7474	8910	20	10	50	12
2000/1880	2450	4280	6110	7940	9770	11600	20	10	50	12
2200/2080	2700	4720	6740	8760	10780	12800	20	15	60	12
2500/2380	2960	5240	7520	9800	12080	14360	20	15	60	16

### 3. SINGLE WALL SEGMENTAL CASING

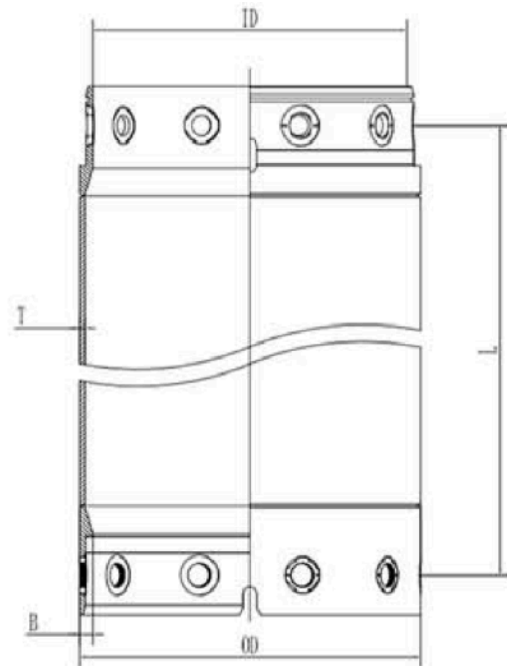
Single-wall casings are made from a single layer of steel and are typically used in simpler geological conditions.

**Advantages:**

- **Lightweight:** Due to their single-layer structure, single-wall casings are lighter and suitable for shallow or soft soil drilling operations.
- **Lower Cost:** They are less expensive to produce and use less material, making them a budget-friendly option for certain projects.

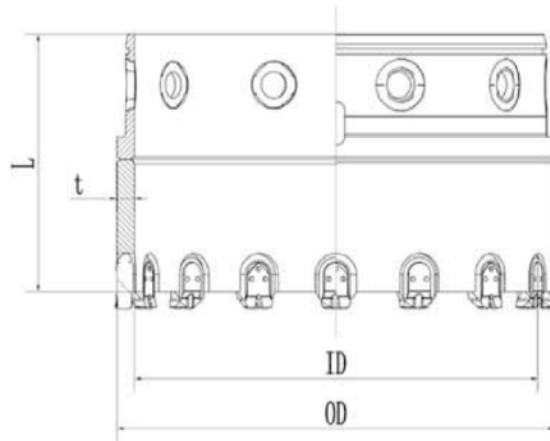
**Applications:**

- Suitable for projects in soft soil or shallow drilling, such as sandy or clay soils, where the geological conditions are relatively straightforward.



DIAMETER	LENGTH L (WEIGHT)						CASING WALL THICKNESS		BOLTS
	D1/D2 (mm)	1m (kg)	2m (kg)	3m (kg)	4m (kg)	5m (kg)	6m (kg)	T (mm)	B (mm)
1300/1220	845	1475	2105	2735	3365	3995	20	40	12
1500/1400	1310	2220	3130	4040	4950	5860	25	50	12
1800/1700	1580	2675	3770	4865	5960	7055	25	50	12
2000/1880	2140	3355	4570	5785	7000	8215	25	60	12
2200/2080	2350	3690	5030	6370	7710	9050	25	60	12
2500/2380	2575	4100	5625	7150	8675	10200	25	60	16

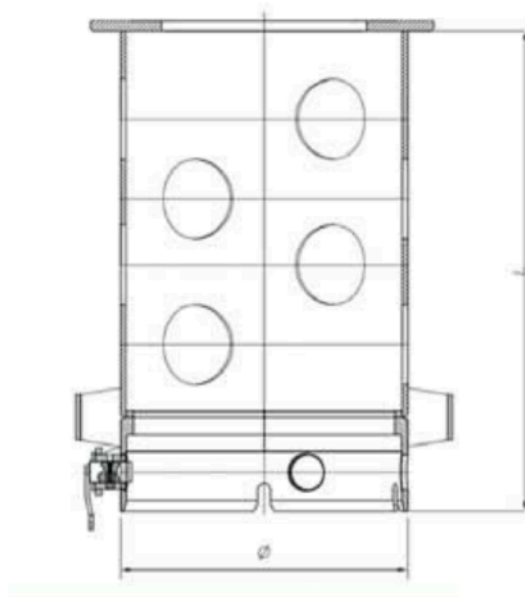
#### 4. CASING SHOE



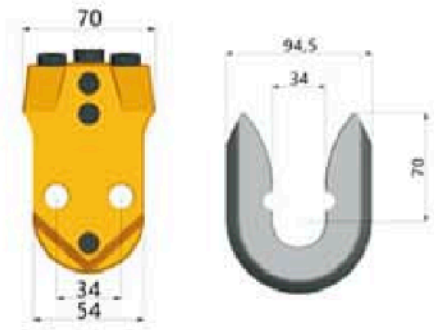
Diameter	620 (mm)	750 (mm)	880 (mm)	1000 (mm)	1180 (mm)	1300 (mm)	1500 (mm)
Tooth Quantity	14	16	18	18	20	24	30
Weight (kg)	309	374	439	500	589	653	955

#### 5. CASING DRIVE ADAPTER

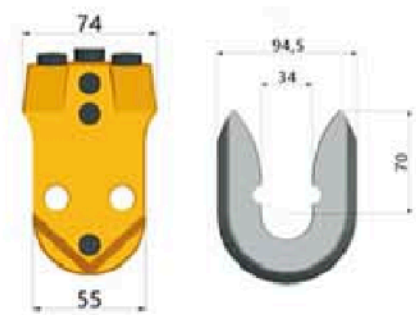
The casing drive adapter is a crucial component designed to transfer torque from the rotary drive to the top of the casing string. Its upper connection is fully customizable to match the specific size and model requirements as specified by the customer.



## 6. CASING ACCESSORIES



Model	Application
WS39	It is a Bauer standard changeable teeth, which can save replacement time. It has a wide range of applications, and suitable for soft to medium hardness casing construction.



Model	Application
WS46	It is a Bauer standard changeable teeth, which can save replacement time. It has a wide range of applications, and suitable for soft to medium hardness casing construction.